

Working with Knifeless Tape

Tips on using a handy vinyl cutting tool

BY JASON GUNNLAUGSON



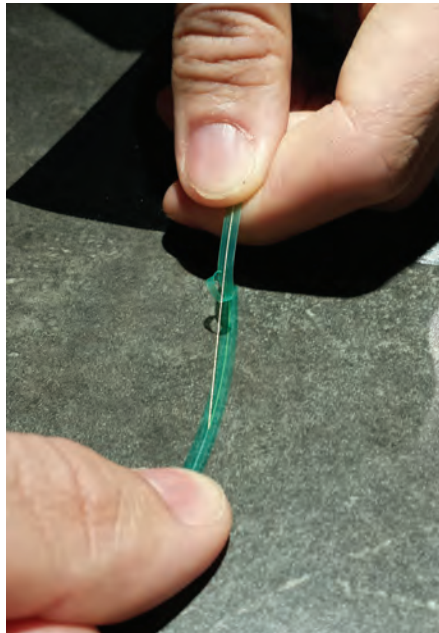
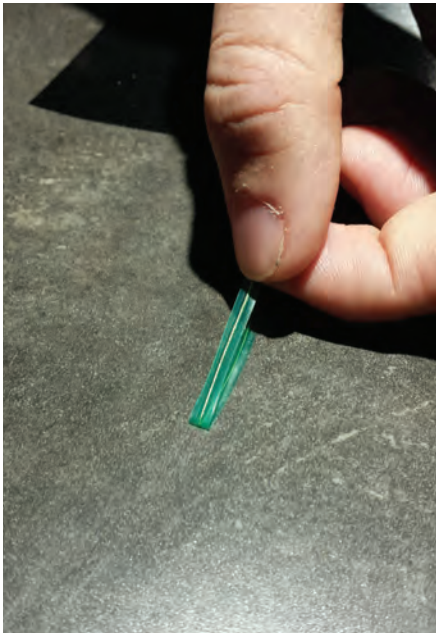
Jason Gunnlaugson
is an account manager
for Knifeless Tech
Systems, [http://
knifelesstechsystems.
com](http://knifelesstechsystems.com).



Knifeless Tape relies upon its centered wire filament to create sharp, accurate cuts. With the advent of DesignLine, the cut quality is now guaranteed to rival a knife or plotter.

Knifeless Tape is a product that was designed to trim vinyl any time you are installing on a substrate that can't be damaged. The product works well on vehicles, but it also has many uses on walls, windows and floors. The product can turn in any direction, create perfect straight lines, and can cut any vinyl sharply and professionally.

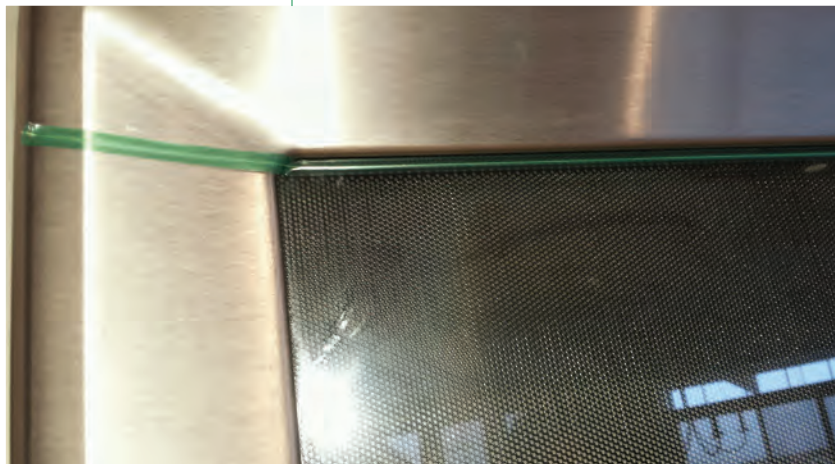
Knifeless Tech owner Garry VanDenBerghe developed the product because vehicles in his small Canadian sign shop would sometimes get damaged during tricky wrap job installations. If the staff didn't have the precise skill that was required of the install, they would sometimes leave blade marks in the vehicle's paint while trimming. After a few make-good repaints, Garry's frustration grew and the birth of Knifeless Tape began. Here we will look at some of the techniques used with this product, as well as some applications.



Starting the tape can be a tricky process, but once mastered it produces quick and easy repeatable starts to your cut. To start the tape, fold the tape over onto itself, push your thumb down over about one centimeter of the fold, and then make a quick snapping motion with the top piece of the tape. If done correctly, the filament will slice the tape directly in half.

The company also offers a Perf Line product designed for installing perforated window film. It can be used on vehicles and also on store windows and the like.

Knifeless Tape offers four established products, with two new products available in January 2014. The four tapes include Finish Line, an original tape made for trimming in the wrapping and color-change wrap industry.



A bridge line can be used to straddle wider gaps on vehicles around doors or the hood.



DesignLine is a new product for the company. The only drawback of DesignLine is that the filament is extremely thin so the product can break if used with very thick vinyl or multiple layers of vinyl, or if the vinyl isn't laid down flat to the substrate. The advantage the super thin filament gives this tape is also the reason this product has been so popular. The super thin filament creates an extremely fine cut.



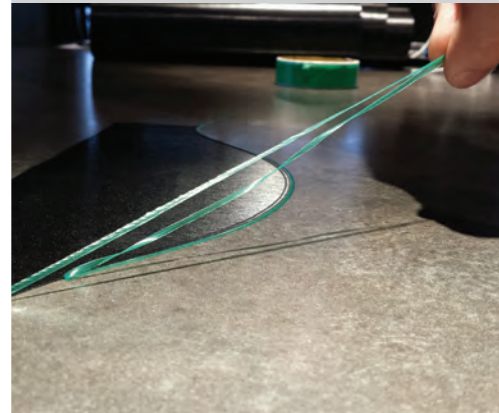
1 To use DesignLine effectively, apply the tape in your desired pattern and then leave about six inches of tape on either end of the cut so that you can start the tape away from the vinyl, thus guaranteeing a clean start to the cut.



2 Lay the vinyl down flat over top of the tape to make sure that it adheres properly.



3 Start the tape and then pull through the vinyl. Keep the filament over top of the tape and low to the substrate to achieve the best results.



4 Pull off the excess vinyl and then pull out the two halves of the now cut-in-half tape. (Please note that neglecting to remove the tape from under the vinyl will result in failure.)



Post-heat the vinyl to the manufacturer's recommendations and enjoy a wonderful finished product.



A great wrap job on this piano from the Sino tour. Could you imagine taking your blade to Jack White's baby grand for a one night show at the Grammy's?

